

## Lever latches with key

Quick-assembly, technopolymer

### MATERIAL

Glass-fibre reinforced polyamide-based (PA) technopolymer, chrome-plated, glossy finish. Lever not chrome-plated.

### PACKING RING

Silicone directly applied onto the back side of the stator head.

### WASHER WITH ELASTIC FIXING WINGS AND SELF-TAPPING SCREWS

Stainless steel.

### KEY

Polyamide based (PA) technopolymer.

### ROTATION

90°.

### IP PROTECTION

IP 65 protection class, according to table EN 60529 (see page A23).

### STANDARD EXECUTIONS

- CQT/A: mark for two-wings key.
- CQT/T: mark for triangular key.

### MAXIMUM CONTINUOUS WORKING TEMPERATURE

80°C.

### DISASSEMBLY TOOL (TO BE ORDERED SEPARATELY)

Code 421550 ATTREZZO CQT.FM. in AISI 304 stainless steel.

### FEATURES

Quick assembly with steel plate thickness ranging from 1 to 2 mm latches.

### TECHNICAL DATA

With its refined look, the latch CQT.FM-CR is particularly suitable for use in situations where frequent cleaning cycles are needed for hygienic reasons, also with the use of water sprays or steam.

The chrome-plated surface is resistant to wear, scrapes and shocks. Laboratory tests carried out at ambient temperature (23°C) proved the resistance of the latch surface to: detergents, acetone, ethyl alcohol, formic acid, chlorine solutions.

### SPECIAL EXECUTIONS ON REQUEST

- Closing levers in zinc-plated steel.
- Latches and keys supplied separately.

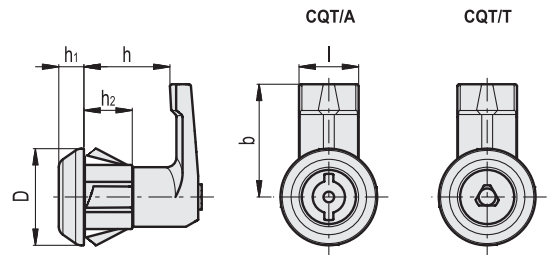
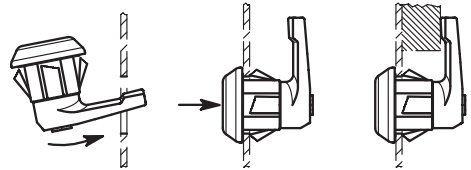
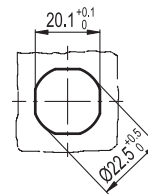
### ASSEMBLY INSTRUCTIONS

The latch is inserted in the mounting hole of the door on the lever side (see picture) until the wings of the elastic washer snap in, ensuring complete fastening.

The latches are supplied with assembled lever for faster mounting. Where needed, the latch can be disassembled from the inside of the door by means of a disassembling tool (to be ordered separately).



Drilling template



### CQT/A

### CQT/T

Code	Description	Code	Description	D	l	b	h	h1	h2	△
421540	CQT/A-FM-35-18-CR	421545	CQT/T-FM-35-18-CR	30	18.5	35	18	8	15	19
421541	CQT/A-FM-35-20-CR	421546	CQT/T-FM-35-20-CR	30	18.5	35	20	8	15	20
421542	CQT/A-FM-35-22-CR	421547	CQT/T-FM-35-22-CR	30	18.5	35	22	8	15	21
421543	CQT/A-FM-35-25-CR	421548	CQT/T-FM-35-25-CR	30	18.5	35	25	8	15	22
421544	CQT/A-FM-35-30-CR	421549	CQT/T-FM-35-30-CR	30	18.5	35	30	8	15	24