

Two-way connecting clamps

Technopolymer

CLAMP

Glass-fibre reinforced polyamide based (PA) technopolymer, RAL 9005 (C9) black colour or grey RAL 7040 (C33) colour, matte finish.

SCREWS AND NUTS (SUPPLIED)

Cylindrical-head screw with hexagon socket in AISI 304 stainless steel with anti-seizure treatment.
Self-locking nuts in AISI 304 stainless steel.

FEATURES

Clamps for tubes with a diameter of 18 ± 0.2 and 30 ± 0.2 mm.
For smaller diameter tubes, the hole reduction sleeve TCC-A can be used (ordered separately).
The "s" grub screws may be replaced by the kit TCC-KS.

TECHNICAL DATA

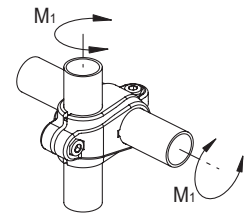
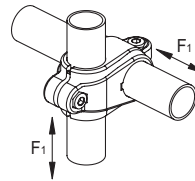
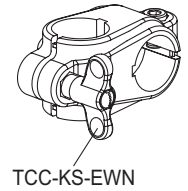
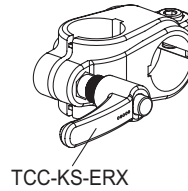
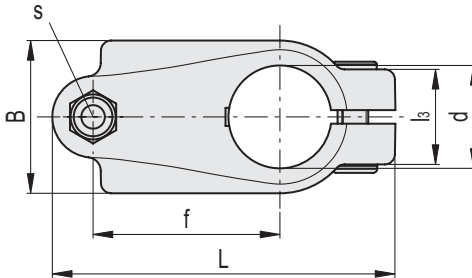
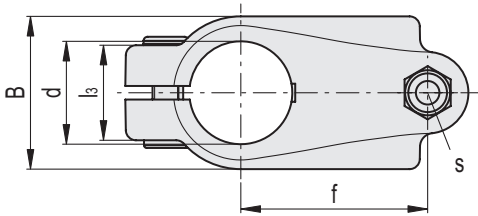
The resistance values shown in the table were measured during laboratory tests at ambient temperature with the screws tightened to the suggested torque "C#".

ACCESSORIES ON REQUEST (TO BE ORDERED SEPARATELY)

- TCC-A: reduction sleeves.
- TCC-KS: clamping kit.
- TCC-KV: screws and clamping nuts.
- GN 990: connecting tubes.



ELESA Original design



STAINLESS STEEL

Code	Description	d	L	B	f	l3	s	C# [Nm]	F1* [N]	M1** [Nm]	⚖️
600121-C9	TCC-CR-18-18-C9	18	65	29	34	21	M6	5	2150	17	41
600121-C33	TCC-CR-18-18-C33	18	65	29	34	21	M6	5	2150	17	41
600221-C9	TCC-CR-30-30-C9	30	100.5	45	54.5	27	M8	12	1350	21	123
600221-C33	TCC-CR-30-30-C33	30	100.5	45	54.5	27	M8	12	1350	21	123

Suggested torque for screw assembly.

* Resistance to tube pull out

** Resistance to tube rotation