

Cam latches with key

Steel or stainless steel cam

STANDARD EXECUTIONS

- BOCK:

- shank in nickel-plated steel with triangular groove for key;
- guide bush and locking nut (wrench 24) in nickel-plated brass;
- DIN 6798 flat spring washer in zinc-plated steel;
- helical latch cam in sintered and vaporized steel with hole for pinning;
- spring dowel pin $\varnothing 3 \times 20$ mm in black-oxide steel;
- latch spring to compensate door thickness in zinc-plated steel;
- Key in polyamide based (PA) technopolymer, black colour, matte finish.
- opening to the right side (D) or left side (S).

- BOCK-SST:

- shank with triangular groove for key, guide bush, locking nut (wrench 24), DIN 6798 flat spring washer in AISI 303 stainless steel;
- helical latch cam in AISI 316 L sintered stainless steel with hole for pinning;
- spring dowel pin $\varnothing 3 \times 20$ mm in AISI 303 stainless steel;
- latch spring to compensate door thickness in AISI 302 stainless steel;
- Key in polyamide based (PA) technopolymer, black colour, matte finish.
- opening to the right side (D) or left side (S).

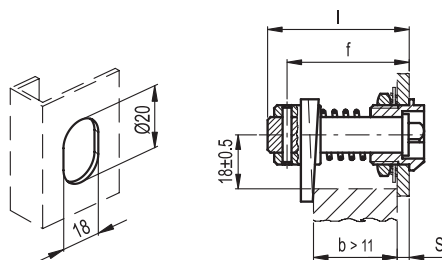
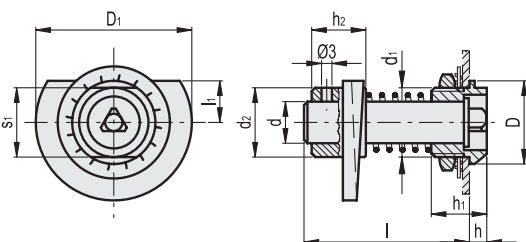
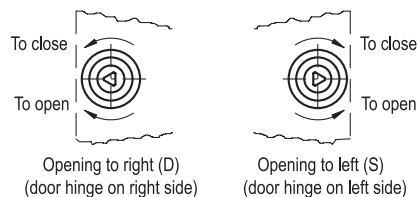


ELESA Original design

ASSEMBLY INSTRUCTIONS

1. Select the latch with shank length (l) according to the following condition $l \geq S + b + 15$ mm (S = thickness of the door, b = thickness of the ledge).
2. Drill a hole in the door following the supplied template.
3. Drill a hole in the shank for pinning at "f" distance;
4. Fit the shank in the hole on the door and assemble the other components.

BOCK. latches are supplied not assembled.



BOCK

Code	Description	D	d1	D1	l	l1	h	h1	h2	d	d2	s1	⚖
6211	BOCK.25-46-D	24	M20x1.5	45	46	12	6	17.5	15	12	20	20	142
6212	BOCK.25-46-S	24	M20x1.5	45	46	12	6	17.5	15	12	20	20	142
6221	BOCK.25-54-D	24	M20x1.5	45	54	12	6	17.5	15	12	20	20	150
6222	BOCK.25-54-S	24	M20x1.5	45	54	12	6	17.5	15	12	20	20	150
6231	BOCK.25-64-D	24	M20x1.5	45	64	12	6	17.5	15	12	20	20	160
6232	BOCK.25-64-S	24	M20x1.5	45	64	12	6	17.5	15	12	20	20	160

BOCK-SST

STAINLESS STEEL

Code	Description	D	d1	D1	l	l1	h	h1	h2	d	d2	s1	⚖
6215	BOCK.25-46-D-SST	24	M20x1.5	45	46	12	6	17.5	15	12	20	20	142
6216	BOCK.25-46-S-SST	24	M20x1.5	45	46	12	6	17.5	15	12	20	20	142
6225	BOCK.25-54-D-SST	24	M20x1.5	45	54	12	6	17.5	15	12	20	20	150
6226	BOCK.25-54-S-SST	24	M20x1.5	45	54	12	6	17.5	15	12	20	20	150