

Stainless Steel-Locking pins

with axial lock (Ball retainer)

SPECIFICATION

Pin
Stainless Steel AISI 303

Knob
Plastic Technopolymer (Polyamide PA)

- black-grey
- temperature resistant up to 80 °C

Ball
Stainless Steel AISI 420C

Spring
Stainless Steel AISI 631

INFORMATION

GN 124.2 Stainless Steel-Locking pins are used for quick fixing, connecting and locking of various jig and fixture systems.

The locking balls are held in position by a pressure spring and are therefore not rigidly locked. The bolts can be quickly and easily inserted and removed from the locating hole.

The rated shear stresses of the bolt cross-section are theoretical guide values only and do not constitute any warranty. They constitute no general warranty of quality and condition. The user must determine from case to case whether a product is suitable for the intended use.

This standard replaces the previous Stainless Steel-Locking pins GN 124.

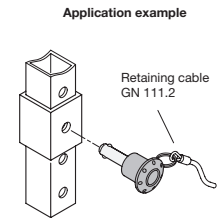
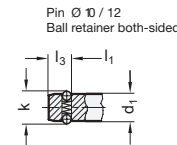
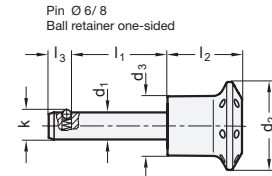
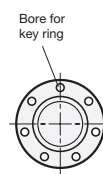
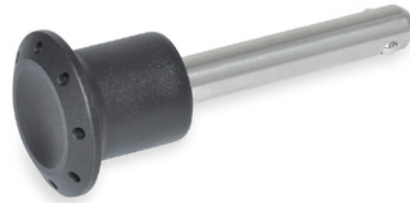
- Range of locking pins (see page 868)

ACCESSORY

- Stainless Steel-Ball chains GN 111.5 (see page 905)
- Retaining cables GN 111.2 (see page 906)

TECHNICAL INFORMATION

- Stainless Steel characteristics (see page A26)
- Plastic characteristics (see page A2)



GN 124.2

STAINLESS STEEL

| Description | d1 -0.04/-0.08 | l1 | d2 | d3 | k | l2 | l3 | Locating bore | Axial holding force in N ≈ | Load in kN ≈ (Double sided shear force) according DIN 50141 | ⚖️ |
|----------------|----------------|----|----|------|------|------|-----|---------------|----------------------------|---|----|
| GN 124.2-6-10 | 6 | 10 | 26 | 17.5 | 6.5 | 22 | 5 | 6 | 8 | 22 | 13 |
| GN 124.2-6-15 | 6 | 15 | 26 | 17.5 | 6.5 | 22 | 5 | 6 | 8 | 22 | 15 |
| GN 124.2-6-20 | 6 | 20 | 26 | 17.5 | 6.5 | 22 | 5 | 6 | 8 | 22 | 16 |
| GN 124.2-6-25 | 6 | 25 | 26 | 17.5 | 6.5 | 22 | 5 | 6 | 8 | 22 | 16 |
| GN 124.2-6-30 | 6 | 30 | 26 | 17.5 | 6.5 | 22 | 5 | 6 | 8 | 22 | 19 |
| GN 124.2-6-50 | 6 | 50 | 26 | 17.5 | 6.5 | 22 | 5 | 6 | 8 | 22 | 19 |
| GN 124.2-8-15 | 8 | 15 | 26 | 17.5 | 8.7 | 22 | 6.3 | 8 | 15 | 40 | 19 |
| GN 124.2-8-20 | 8 | 20 | 26 | 17.5 | 8.7 | 22 | 6.3 | 8 | 15 | 40 | 19 |
| GN 124.2-8-25 | 8 | 25 | 26 | 17.5 | 8.7 | 22 | 6.3 | 8 | 15 | 40 | 20 |
| GN 124.2-8-30 | 8 | 30 | 26 | 17.5 | 8.7 | 22 | 6.3 | 8 | 15 | 40 | 25 |
| GN 124.2-8-50 | 8 | 50 | 26 | 17.5 | 8.7 | 22 | 6.3 | 8 | 15 | 40 | 33 |
| GN 124.2-10-15 | 10 | 15 | 34 | 23 | 12 | 28.5 | 8.7 | 10 | 30 | 62 | 39 |
| GN 124.2-10-20 | 10 | 20 | 34 | 23 | 12 | 28.5 | 8.7 | 10 | 30 | 62 | 42 |
| GN 124.2-10-25 | 10 | 25 | 34 | 23 | 12 | 28.5 | 8.7 | 10 | 30 | 62 | 45 |
| GN 124.2-10-30 | 10 | 30 | 34 | 23 | 12 | 28.5 | 8.7 | 10 | 30 | 62 | 48 |
| GN 124.2-10-50 | 10 | 50 | 34 | 23 | 12 | 28.5 | 8.7 | 10 | 30 | 62 | 59 |
| GN 124.2-12-20 | 12 | 20 | 34 | 23 | 14.5 | 28.5 | 9.5 | 12 | 32 | 90 | 51 |
| GN 124.2-12-30 | 12 | 30 | 34 | 23 | 14.5 | 28.5 | 9.5 | 12 | 32 | 90 | 59 |
| GN 124.2-12-40 | 12 | 40 | 34 | 23 | 14.5 | 28.5 | 9.5 | 12 | 32 | 90 | 68 |
| GN 124.2-12-50 | 12 | 50 | 34 | 23 | 14.5 | 28.5 | 9.5 | 12 | 32 | 90 | 75 |



Indexing elements