

Finger handles

Technopolymer

MATERIAL

Polyamide based (PA) technopolymer, chrome-plated, matte finish.

STANDARD EXECUTION

Blind holes for fitting by means of no. 2 self-tapping screws for plastic materials Ø3.5 (UNI ISO 7049), not included in the supply.
Maximum tightening torque of the self-tapping screws 1,2 [Nm].

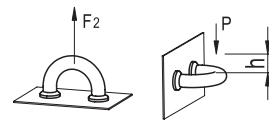
CHEMICAL AGENTS RESISTANCE (FOR MFH-CR)

The chrome-plating makes the surface finish semi-glossy and homogeneous to facilitate cleaning operations.

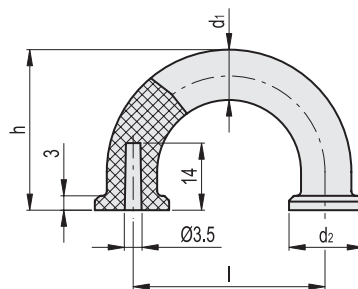
The chrome-plated surface is resistant to wear, scrapes and shocks. Laboratory tests carried out at ambient temperature (23°C) proved the resistance of the latch surface to: detergents, acetone, ethyl alcohol, formic acid, chlorine solutions.

TECHNICAL DATA

Tensile stress and impact strength: the values F2 and L1 indicated in the table were obtained during breaking tests carried out with the appropriate dynamometric equipment under the test conditions shown in the figure with ambient temperature.



$$L1 [J] = P [N] \cdot h [m]$$



Code	Description	l	d1	d2	h	F2 [N]	L1 [J]	⚖️
152501	MFH-30-AF 3,5-CR	29.5	9	12	27	2300	6	6
152511	MFH-40-AF 3,5-CR	39.5	10	15	33.5	2300	10	9