

## Two-arm handwheels

Technopolymer and steel

### MATERIAL

Glass-fibre reinforced polyamide based (PA) technopolymer, black colour, glossy finish.

### ARMS

Matte chrome-plated steel complete with handles type I.622 (see page 535) in technopolymer.

### STANDARD EXECUTION

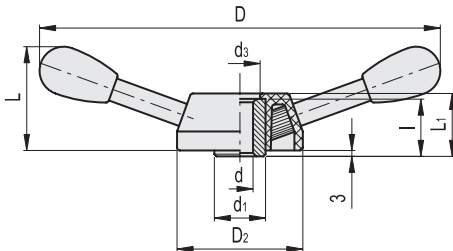
Black-oxide steel boss, uncovered front end with pre-drilled pass-through hole.

### ACCESSORIES ON REQUEST

Axial retaining washer GN 184 (see page 971).



ELESA Original design



Code	Description	D	dH9	L	L1	D2	d1	d3	I	C# [Nm]	
65801	VBR.2/200	200	10	60	42	86	35	34	38	195	600
65811	VBR.2/280	274	10	74	42	86	35	34	38	195	715
65821	VBR.2/320	312	10	80	42	86	35	34	38	195	780
65831	VBR.2/370	363	10	90	42	86	35	34	38	195	865

# For maximum applicable torque (C) and impact strength (L) see Technical Data on page A3.

