

Lobe knobs

Technopolymer

MATERIAL

High-resilience polypropylene based (PP) technopolymer, black colour, matte finish.

VCT.25: glass-fibre reinforced polyamide based (PA) technopolymer, black colour, matte finish.

COLOURED CENTRE CAP

Technopolymer, matte finish. Not available for VCT.25.

To order, add the index of the desired colour (C9, ..., C17) to the code and the description.

On request and for sufficient quantities it can be supplied in other colours or with customised graphic symbols, marks or writings.

STANDARD EXECUTIONS

- **VCT-A:** black-oxide steel boss, plain blind hole.
- **VCT-B:** brass boss, threaded blind hole (VCT.25 - 95) or threaded pass-through hole (VCT.32 - 40 - 50 - 63 - 74 - 84).
- **VCT-AZ:** zinc-plated steel boss, threaded pass-through hole.
- **VCT-SST:** AISI 303 stainless steel boss, threaded blind hole (VCT.25) or threaded pass-through hole (VCT.32 - 40 - 50 - 63 - 74 - 84).
- **VCT-FP:** brass boss, threaded pass-through hole, without cap.
- **VCT-AZ-FP:** zinc-plated steel boss, threaded pass-through hole, without cap.
- **VCT-SST-FP:** AISI 303 stainless steel boss, threaded pass-through hole, without cap.
- **VCT-p:** zinc-plated steel threaded stud, chamfered flat end according to UNI 947 : ISO 4753 (see Technical data on page A11).
- **VCT-SST-p:** AISI 303 stainless steel threaded stud, chamfered flat end according to UNI 947 : ISO 4753 (see Technical data on page A11).

ACCESSORIES ON REQUEST

Coloured centre caps (see table).

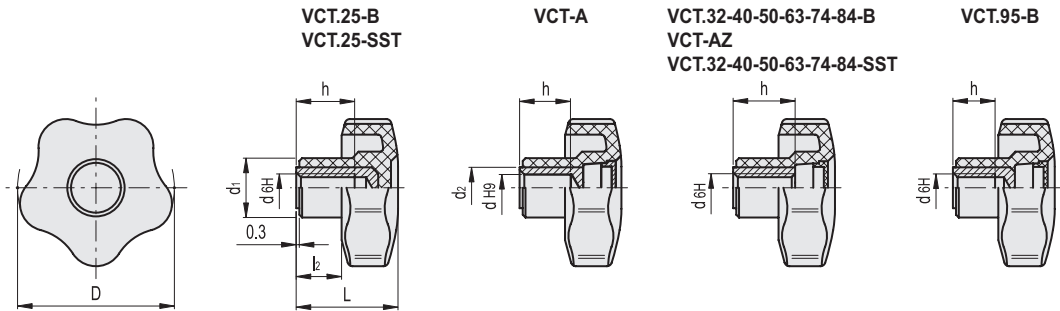


ELESA Original design

Cap for	C9	C2	C3	C4	C5	C6	C17	Description
VCT.32	6900	6903	6904	6905	6906	6901	6907	CA.VCT.32-*
VCT.40	6910	6913	6914	6915	6916	6911	6917	CA.VCT.40-*
VCT.50	6920	6923	6924	6925	6926	6921	6927	CA.VCT.50-*
VCT.63-74-95	6930	6933	6934	6935	6936	6931	6937	CA.VCT.63-74-95-*

* Complete with colour index (C9, ..., C17).

C9	C2	C3	C4	C5	C6	C17
RAL9005	RAL2004	RAL7035	RAL1021	RAL5024	RAL3000	RAL6017



* Complete with colour index, example: 69841-C2 VCT.32 A-6-C2

C9	C2	C3	C4	C5	C6	C17
RAL9005	RAL2004	RAL7035	RAL1021	RAL5024	RAL3000	RAL6017

VCT-A

Code	Description	D	dH9	L	d1	d2	l2	h	
69892-*	VCT.40 A-8-*	40	8	27	17	12	12	14	36
69951-*	VCT.50 A-8-*	50	8	32	19	12	14	14	37
69952-*	VCT.50 A-10-*	50	10	32	19	15	14	16	34
70001-*	VCT.63 A-8-*	63	8	37	22	15	16	20	52
70002-*	VCT.63 A-10-*	63	10	37	22	16	16	21	49
70051-*	VCT.74 A-8-*	74	8	43.5	26	15	22	20	65



* Complete with colour index, example: 69843-C2 VCT.32 B-M5-C2



VCT-B

Code	Description	D	d6H	L	d1	l2	h	C# [Nm]	⚖️
69811-C9	VCT.25 B-M4-C9	25	M4	19	13	8	10	6	7
69812-C9	VCT.25 B-M5-C9	25	M5	19	13	8	10	7	6
69813-C9	VCT.25 B-M6-C9	25	M6	19	13	8	10	7	5
69843-*	VCT.32 B-M5-*	32	M5	23	15	10	12	10	11
69844-*	VCT.32 B-M6-*	32	M6	23	15	10	12	10	10
69845-*	VCT.32 B-M8-*	32	M8	23	15	10	12	10	9
69893-*	VCT.40 B-M6-*	40	M6	27	17	12	18	16	26
69894-*	VCT.40 B-M8-*	40	M8	27	17	12	18	18	24
69895-*	VCT.40 B-M10-*	40	M10	27	17	12	17	18	23
69953-*	VCT.50 B-M8-*	50	M8	32	19	14	20	25	38
69954-*	VCT.50 B-M10-*	50	M10	32	19	14	20	27	34
69955-*	VCT.50 B-M12-*	50	M12	32	19	14	20	27	30
70012-*	VCT.63 B-M8-*	63	M8	37	22	16	26	48	45
70013-*	VCT.63 B-M10-*	63	M10	37	22	16	26	50	42
70014-*	VCT.63 B-M12-*	63	M12	37	22	16	26	50	40
70062-*	VCT.74 B-M12-*	74	M12	43.5	26	22	26	60	57
70063-*	VCT.74 B-M14-*	74	M14	43.5	26	22	26	65	53
70064-*	VCT.74 B-M16-*	74	M16	43.5	26	22	31	69	55
70097-*	VCT.95 B-M16-*	95	M16	46	32	21	22	100	109

VCT-AZ

Code	Description	D	d6H	L	d1	l2	h	C# [Nm]	⚖️
69741-C9	VCT.32 AZ-M4-C9	32	M4	23	15	10	12	10	12
69742-C9	VCT.32 AZ-M5-C9	32	M5	23	15	10	12	10	11
69743-C9	VCT.32 AZ-M6-C9	32	M6	23	15	10	12	10	10
69752-C9	VCT.40 AZ-M6-C9	40	M6	27	17	12	18	16	26
69753-C9	VCT.40 AZ-M8-C9	40	M8	27	17	12	18	18	24
69761-C9	VCT.50 AZ-M8-C9	50	M8	32	19	14	20	25	38
69762-C9	VCT.50 AZ-M10-C9	50	M10	32	19	14	20	27	34
69772-C9	VCT.63 AZ-M10-C9	63	M10	37	22	16	26	50	42
69773-C9	VCT.63 AZ-M12-C9	63	M12	37	22	16	26	50	40
69782-C9	VCT.74 AZ-M12-C9	74	M12	43.5	26	22	26	60	57
69784-C9	VCT.74 AZ-M16-C9	74	M16	43.5	26	22	31	69	55

VCT-SST

STAINLESS STEEL

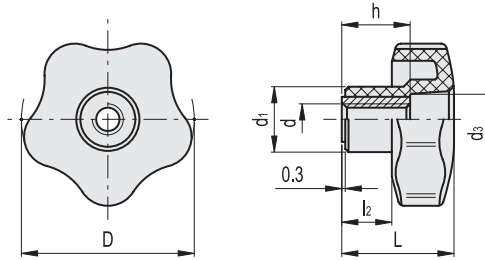
Code	Description	D	d6H	L	d1	l2	h	C# [Nm]	⚖️
69807-C9	VCT.25-SST-M4-C9	25	M4	19	13	8	10	7	6
69873-*	VCT.32-SST-M5-*	32	M5	23	15	10	12	10	11
69874-*	VCT.32-SST-M6-*	32	M6	23	15	10	12	10	10
69941-*	VCT.40-SST-M6-*	40	M6	27	17	12	18	16	26
69943-*	VCT.40-SST-M8-*	40	M8	27	17	12	18	18	24
69991-*	VCT.50-SST-M8-*	50	M8	32	19	14	20	27	39
69993-*	VCT.50-SST-M10-*	50	M10	32	19	14	20	27	35
70005-*	VCT.63-SST-M10-*	63	M10	37	22	16	26	50	43
70006-*	VCT.63-SST-M12-*	63	M12	37	22	16	26	50	41
70056-*	VCT.74-SST-M12-*	74	M12	43.5	26	22	26	60	58

"Max limit Tightening torque" means the max torque value at which the metal insert, in normal conditions of use, is perfectly and strongly anchored to the plastic material.





VCT-FP
VCT-AZ-FP
VCT-SST-FP



VCT-FP

Code	Description	D	d6H	L	d1	d3	l2	h	⚖
69847	VCT.32 FP-M5	32	M5	23	15	10	10	12	11
69848	VCT.32 FP-M6	32	M6	23	15	10	10	12	10
69849	VCT.32 FP-M8	32	M8	23	15	10	10	12	9
69897	VCT.40 FP-M6	40	M6	27	17	12	12	18	26
69898	VCT.40 FP-M8	40	M8	27	17	12	12	18	24
69899	VCT.40 FP-M10	40	M10	27	17	12	12	17	23
69956	VCT.50 FP-M8	50	M8	32	19	15	14	20	38
69957	VCT.50 FP-M10	50	M10	32	19	15	14	20	34
69958	VCT.50 FP-M12	50	M12	32	19	15	14	20	30
70016	VCT.63 FP-M8	63	M8	37	22	19	16	26	44
70017	VCT.63 FP-M10	63	M10	37	22	19	16	26	42
70018	VCT.63 FP-M12	63	M12	37	22	19	16	26	40
70067	VCT.74 FP-M12	74	M12	43.5	26	17	22	26	56
70068	VCT.74 FP-M14	74	M14	43.5	26	17	22	26	52
70069	VCT.74 FP-M16	74	M16	43.5	26	17	22	31	54

VCT-AZ-FP

Code	Description	D	d6H	L	d1	d3	l2	h	⚖
69746	VCT.32 AZ-FP-M6	32	M6	23	15	10	10	12	10
69756	VCT.40 AZ-FP-M8	40	M8	27	17	12	12	18	26
69766	VCT.50 AZ-FP-M8	50	M8	32	19	15	14	20	38
69767	VCT.50 AZ-FP-M10	50	M10	32	19	15	14	20	34
69776	VCT.63 AZ-FP-M12	63	M12	37	22	19	16	26	40
69786	VCT.74 AZ-FP-M12	74	M12	43.5	26	17	22	31	56

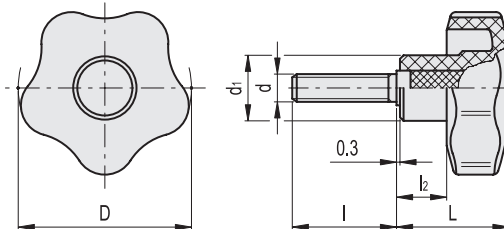
VCT-SST-FP

STAINLESS STEEL

Code	Description	D	d6H	L	d1	d3	l2	h	⚖
69877	VCT.32-SST-FP-M5	32	M5	23	15	10	10	12	12
69878	VCT.32-SST-FP-M6	32	M6	23	15	10	10	12	13
69942	VCT.40-SST-FP-M6	40	M6	27	17	12	12	18	27
69944	VCT.40-SST-FP-M8	40	M8	27	17	12	12	18	25
69992	VCT.50-SST-FP-M8	50	M8	32	19	15	14	20	39
69994	VCT.50-SST-FP-M10	50	M10	32	19	15	14	20	35
70007	VCT.63-SST-FP-M10	63	M10	37	22	19	16	26	43
70008	VCT.63-SST-FP-M12	63	M12	37	22	19	16	26	41
70057	VCT.74-SST-FP-M12	74	M12	43.5	26	17	22	26	57

"Max limit Tightening torque" means the max torque value at which the metal insert, in normal conditions of use, is perfectly and strongly anchored to the plastic material.

VCT-p



* Complete with colour index, example: 69872-C2 VCT.32 p-M5x20-C2

- C9
RAL9005
- C2
RAL2004
- C3
RAL7035
- C4
RAL1021
- C5
RAL5024
- C6
RAL3000
- C17
RAL6017

VCT-p

Code	Description	D	d6g	L	d1	l	l2	C#	[Nm]	
69816-C9	VCT.25 p-M4x6-C9	25	M4	19	13	6	8	5	5	
69817-C9	VCT.25 p-M4x10-C9	25	M4	19	13	10	8	5	6	
69821-C9	VCT.25 p-M5x10-C9	25	M5	19	13	10	8	6	7	
69822-C9	VCT.25 p-M5x16-C9	25	M5	19	13	16	8	6	8	
69823-C9	VCT.25 p-M5x20-C9	25	M5	19	13	20	8	6	9	
69824-C9	VCT.25 p-M5x25-C9	25	M5	19	13	25	8	6	10	
69825-C9	VCT.25 p-M5x30-C9	25	M5	19	13	30	8	6	12	
69826-C9	VCT.25 p-M5x40-C9	25	M5	19	13	40	8	6	14	
69831-C9	VCT.25 p-M6x10-C9	25	M6	19	13	10	8	6	8	
69832-C9	VCT.25 p-M6x16-C9	25	M6	19	13	16	8	6	9	
69833-C9	VCT.25 p-M6x20-C9	25	M6	19	13	20	8	6	10	
69835-C9	VCT.25 p-M6x25-C9	25	M6	19	13	25	8	6	11	
69834-C9	VCT.25 p-M6x30-C9	25	M6	19	13	30	8	6	13	
69836-C9	VCT.25 p-M6x40-C9	25	M6	19	13	40	8	6	15	
69872-*	VCT.32 p-M5x20-*	32	M5	23	15	20	10	6	13	
69851-*	VCT.32 p-M6x16-*	32	M6	23	15	16	10	8	13	
69852-*	VCT.32 p-M6x20-*	32	M6	23	15	20	10	8	14	
69853-*	VCT.32 p-M6x25-*	32	M6	23	15	25	10	8	15	
69854-*	VCT.32 p-M6x30-*	32	M6	23	15	30	10	8	16	
69855-*	VCT.32 p-M6x35-*	32	M6	23	15	35	10	8	17	
69856-*	VCT.32 p-M6x40-*	32	M6	23	15	40	10	8	18	
69857-*	VCT.32 p-M6x45-*	32	M6	23	15	45	10	8	19	
69858-*	VCT.32 p-M6x50-*	32	M6	23	15	50	10	8	20	
69860-*	VCT.32 p-M6x60-*	32	M6	23	15	60	10	8	21	
69859-*	VCT.32 p-M8x16-*	32	M8	23	15	16	10	8	14	
69861-*	VCT.32 p-M8x20-*	32	M8	23	15	20	10	8	18	
69863-*	VCT.32 p-M8x30-*	32	M8	23	15	30	10	8	21	
69865-*	VCT.32 p-M8x40-*	32	M8	23	15	40	10	8	24	
69867-*	VCT.32 p-M8x50-*	32	M8	23	15	50	10	8	26	
69901-*	VCT.40 p-M6x20-*	40	M6	27	17	20	12	13	18	
69902-*	VCT.40 p-M6x25-*	40	M6	27	17	25	12	13	19	
69903-*	VCT.40 p-M6x30-*	40	M6	27	17	30	12	13	20	
69911-*	VCT.40 p-M8x16-*	40	M8	27	17	16	12	16	23	
69912-*	VCT.40 p-M8x20-*	40	M8	27	17	20	12	16	24	
69913-*	VCT.40 p-M8x25-*	40	M8	27	17	25	12	16	26	
69914-*	VCT.40 p-M8x30-*	40	M8	27	17	30	12	16	27	
69915-*	VCT.40 p-M8x35-*	40	M8	27	17	35	12	16	28	
69916-*	VCT.40 p-M8x40-*	40	M8	27	17	40	12	16	30	
69917-*	VCT.40 p-M8x45-*	40	M8	27	17	45	12	16	32	
69918-*	VCT.40 p-M8x50-*	40	M8	27	17	50	12	16	35	
69919-*	VCT.40 p-M8x55-*	40	M8	27	17	55	12	16	36	
69922-*	VCT.40 p-M8x70-*	40	M8	28	17	70	12	16	40	
69931-*	VCT.40 p-M10x20-*	40	M10	27	17	20	12	18	26	
69933-*	VCT.40 p-M10x25-*	40	M10	27	17	25	12	18	28	
69935-*	VCT.40 p-M10x30-*	40	M10	27	17	30	12	18	30	
69937-*	VCT.40 p-M10x40-*	40	M10	27	17	40	12	18	32	
69939-*	VCT.40 p-M10x50-*	40	M10	27	17	50	12	18	34	

VCT-p

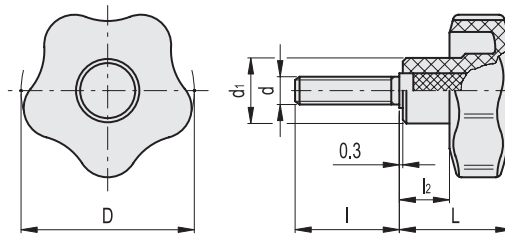
Code	Description	D	d6g	L	d1	l	l2	C#	[Nm]	
69960-*	VCT.50 p-M8x16-*	50	M8	32	19	16	14	16	26	
69961-*	VCT.50 p-M8x20-*	50	M8	32	19	20	14	16	28	
69962-*	VCT.50 p-M8x25-*	50	M8	32	19	25	14	16	30	
69963-*	VCT.50 p-M8x30-*	50	M8	32	19	30	14	16	31	
69965-*	VCT.50 p-M8x40-*	50	M8	32	19	40	14	16	33	
69967-*	VCT.50 p-M8x50-*	50	M8	32	19	50	14	16	35	
69970-*	VCT.50 p-M10x16-*	50	M10	32	19	16	14	23	34	
69971-*	VCT.50 p-M10x20-*	50	M10	32	19	20	14	23	36	
69972-*	VCT.50 p-M10x25-*	50	M10	32	19	25	14	23	39	
69973-*	VCT.50 p-M10x30-*	50	M10	32	19	30	14	23	41	
69974-*	VCT.50 p-M10x35-*	50	M10	32	19	35	14	23	43	
69975-*	VCT.50 p-M10x40-*	50	M10	32	19	40	14	23	46	
69976-*	VCT.50 p-M10x45-*	50	M10	32	19	45	14	23	48	
69977-*	VCT.50 p-M10x50-*	50	M10	32	19	50	14	23	51	
69978-*	VCT.50 p-M10x55-*	50	M10	32	19	55	14	23	53	
69979-*	VCT.50 p-M10x60-*	50	M10	32	19	60	14	23	55	
69981-*	VCT.50 p-M12x20-*	50	M12	32	19	20	14	25	39	
69983-*	VCT.50 p-M12x30-*	50	M12	32	19	30	14	25	44	
69985-*	VCT.50 p-M12x40-*	50	M12	32	19	40	14	25	49	
69987-*	VCT.50 p-M12x50-*	50	M12	32	19	50	14	25	54	
69989-*	VCT.50 p-M12x60-*	50	M12	32	19	60	14	25	59	
70021-*	VCT.63 p-M10x20-*	63	M10	37	22	20	16	37	54	
70023-*	VCT.63 p-M10x30-*	63	M10	37	22	30	16	37	59	
70025-*	VCT.63 p-M10x40-*	63	M10	37	22	40	16	37	64	
70027-*	VCT.63 p-M10x50-*	63	M10	37	22	50	16	37	69	
70029-*	VCT.63 p-M10x60-*	63	M10	37	22	60	16	37	74	
70030-*	VCT.63 p-M12x20-*	63	M12	37	22	20	16	46	65	
70031-*	VCT.63 p-M12x25-*	63	M12	37	22	25	16	46	67	
70032-*	VCT.63 p-M12x30-*	63	M12	37	22	30	16	46	67	
70034-*	VCT.63 p-M12x35-*	63	M12	37	22	35	16	46	70	
70033-*	VCT.63 p-M12x40-*	63	M12	37	22	40	16	46	73	
70036-*	VCT.63 p-M12x50-*	63	M12	37	22	50	16	46	79	
70039-*	VCT.63 p-M12x60-*	63	M12	37	22	60	16	46	85	
70083-*	VCT.74 p-M12x30-*	74	M12	43.5	26	30	22	68	86	
70085-*	VCT.74 p-M12x50-*	74	M12	43.5	26	50	22	68	98	
70087-*	VCT.74 p-M12x70-*	74	M12	43.5	26	70	22	68	110	
70095-*	VCT.74 p-M14x50-*	74	M14	43.5	26	50	22	78	106	
70089-*	VCT.74 p-M16x30-*	74	M16	43.5	26	30	22	80	132	
70090-*	VCT.74 p-M16x40-*	74	M16	43.5	26	40	22	80	144	
70091-*	VCT.74 p-M16x50-*	74	M16	43.5	26	50	22	80	156	
70092-*	VCT.74 p-M16x60-*	74	M16	43.5	26	60	22	80	168	
70093-*	VCT.74 p-M16x70-*	74	M16	43.5	26	70	22	80	180	
70099-*	VCT.95 p-M16x50-*	95	M16	46	32	50	21	138	175	

"Max limit Tightening torque" means the max torque value at which the metal insert, in normal conditions of use, is perfectly and strongly anchored to the plastic material.





VCT-SST-p



* Complete with colour index, example: 69881-C2 VCT.32-SST-p-M6x16-C2

- C9**
RAL9005
- C2**
RAL2004
- C3**
RAL7035
- C4**
RAL1021
- C5**
RAL5024
- C6**
RAL3000

VCT-SST-p

STAINLESS STEEL

Code	Description	D	d6g	L	d1	l	l2	C# [Nm]	⚖
69837-C9	VCT.25-SST-p-M5x10-C9	25	M5	19	13	10	8	6	8
69838-C9	VCT.25-SST-p-M5x16-C9	25	M5	19	13	16	8	6	9
69839-C9	VCT.25-SST-p-M5x20-C9	25	M5	19	13	20	8	6	10
69840-C9	VCT.25-SST-p-M5x25-C9	25	M5	19	13	25	8	6	11
69881.*	VCT.32-SST-p-M6x16-*	32	M6	23	15	16	10	8	14
69882.*	VCT.32-SST-p-M6x20-*	32	M6	23	15	20	10	8	15
69883.*	VCT.32-SST-p-M6x25-*	32	M6	23	15	25	10	8	16
69884.*	VCT.32-SST-p-M6x30-*	32	M6	23	15	30	10	8	17
69945.*	VCT.40-SST-p-M8x20-*	40	M8	27	17	20	12	18	25
69946.*	VCT.40-SST-p-M8x25-*	40	M8	27	17	25	12	18	27
69947.*	VCT.40-SST-p-M8x30-*	40	M8	27	17	30	12	18	28
69948.*	VCT.40-SST-p-M8x40-*	40	M8	27	17	40	12	18	31
69995.*	VCT.50-SST-p-M10x20-*	50	M10	32	19	20	14	25	37
69996.*	VCT.50-SST-p-M10x25-*	50	M10	32	19	25	14	25	40
69997.*	VCT.50-SST-p-M10x30-*	50	M10	32	19	30	14	25	42
70000.*	VCT.50-SST-p-M10x40-*	50	M10	32	19	40	14	25	45
69998.*	VCT.50-SST-p-M10x45-*	50	M10	32	19	45	14	25	49
69999.*	VCT.50-SST-p-M10x55-*	50	M10	32	19	55	14	25	54
70042.*	VCT.63-SST-p-M12x30-*	63	M12	37	22	30	16	46	68
70043.*	VCT.63-SST-p-M12x40-*	63	M12	37	22	40	16	46	74
70046.*	VCT.63-SST-p-M12x50-*	63	M12	37	22	50	16	46	80
70073.*	VCT.74-SST-p-M12x30-*	74	M12	43.5	26	30	22	68	87
70075.*	VCT.74-SST-p-M12x50-*	74	M12	43.5	26	50	22	68	100

"Max limit Tightening torque" means the max torque value at which the metal insert, in normal conditions of use, is perfectly and strongly anchored to the plastic material.